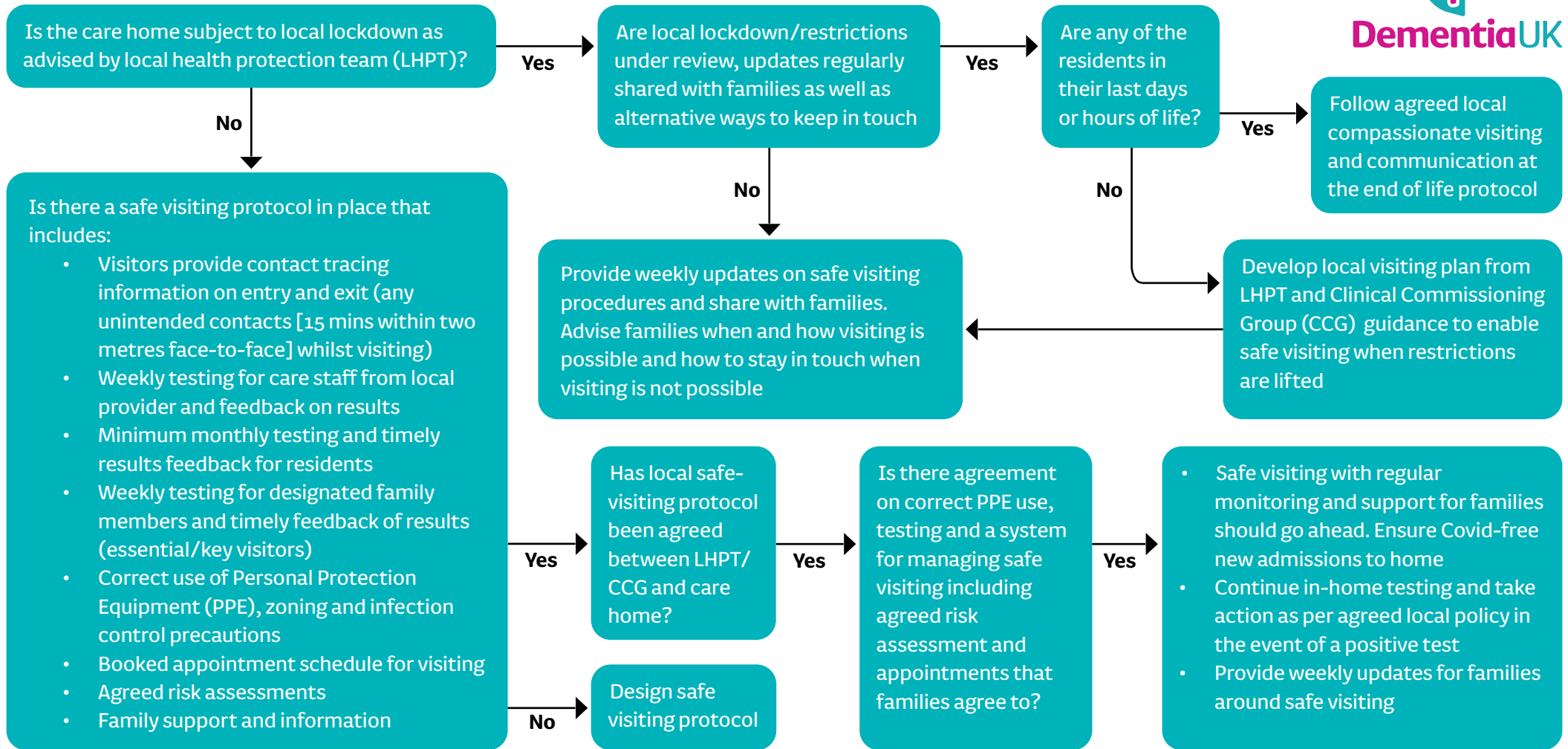


Recommendations for safe visiting in care homes during the Covid-19 pandemic



DementiaUK



Safe visiting may include:
In room, through a screen,
visiting lounges/pods,
garden, window, drive
through visits

Safe visiting will include:
Infection control precautions
e.g. hand washing/ sanitising,
face masks/coverings, visors,
gloves and aprons and check
list protocol, collection of
contact tracing information

If visiting is **not possible** - agree with family:

1. What and how care will stay the same (e.g. despite infection control precautions)
2. What and how care will be different (e.g. because of infection control precautions)
3. If there is a deterioration, what and how will information and decisions be made (e.g. end of life, symptoms)
4. Confirm emergency numbers and lasting power of attorney (health and welfare) documents